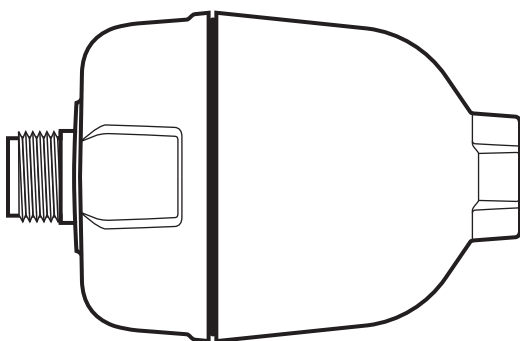




Aquashower™

Refresh Your Shower Experience



The Multipure Aquashower promotes healthier and younger looking skin and more manageable hair. Chlorine is reduced by the use of patented KDF 55 media that we have specially enhanced for more effective performance. The shower filter was tested by WQA according to NSF International NSF/ANSI Standard 177 to 25,000 gallons. You may go to the WQA website at www.wqa.org for more information.

Note: This product contains non-toxic granular filter media which is produced within the regulations of "The Drinking Water Act" (PL 99-399 of June 19, 1986). Some of the very smallest grains may shake out during normal shipping and handling. This is normal and does not mean that the filter is defective or damaged in any way. When the filter is wet, the grains are held together and are not flushed out by the water flow while the unit is in operation. We have placed a plastic plug on the inlet on the shower filter to minimize this problem; please remove this plug before trying to install.

Features

- Our special Crystalline Quartz technology. Specialty cured crystals act upon the water to create a softer, energy-enhanced shower.
- When used with the best flow-reduction showerheads for optimal water delivery, you will save water and energy costs and enjoy the best shower experience possible.

- The Aquashower Filter (AQSH) is designed to provide long lasting performance for a variety of water conditions.

Instructions for Installation:

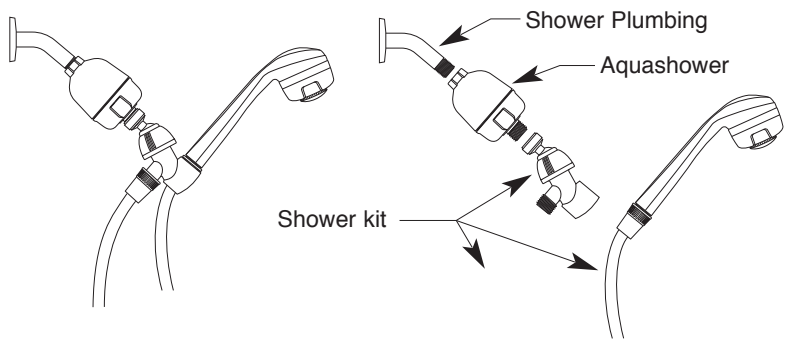
Remove existing showerhead using an adjustable wrench if necessary.
NOTE: If your shower arm has an integral ball joint, it may be replaced with a standard 1/2" shower arm or an adapter may be used. Purchase correct adapter from a hardware or plumbing supply store with the help of the following table:

Plumb Shop Adapter Part #	Shower Brand	Approx. Thread Diam.	# Threads Per Inch
PS 2592	American Std.	1 (one)	16
PS 2592	Price Pfister	1 (one)	20
PS 2592	Gerber	1-1/4	Unknown

This product must be used in compliance with state and local laws and regulations

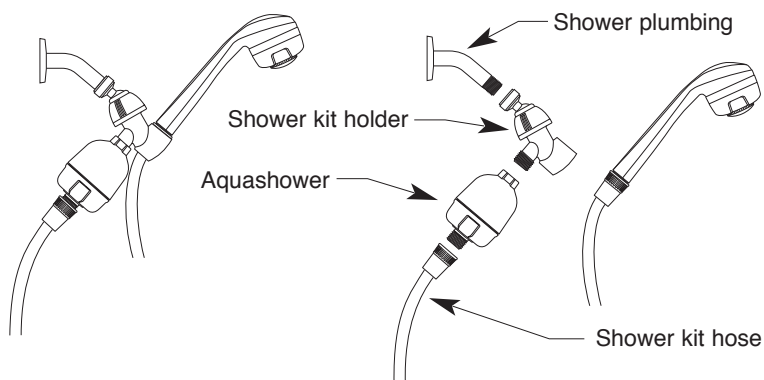
Instructions for Installation:

There are two installation options when using the Aquashower with handheld shower kits:



OPTION A

Install the Aquashower between the shower plumbing and the shower kit.

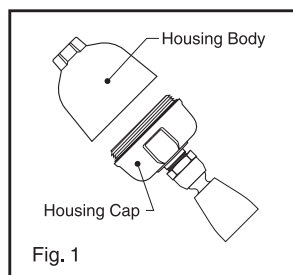


OPTION B

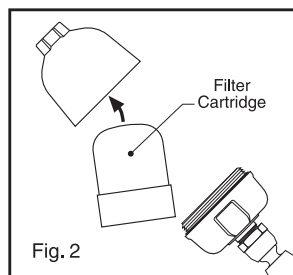
Install the Aquashower onto the shower kit holder and the shower kit hose.

Installing Filter Cartridge

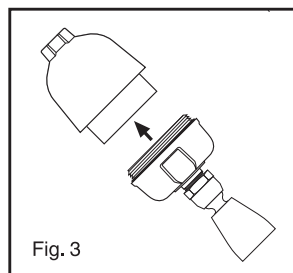
1. Unscrew housing cap from housing body.
(Fig. 1)



2. Re-position two internal rubber o-rings if they are dislodged. Place small o-ring into the groove in the filter housing body. Place large o-ring into groove in housing cap. Be sure the o-rings and the grooves they are placed into are clean and free of any grains of filtering media.



3. Place filter cartridge into housing body. Screw the top and bottom parts together. (Fig. 2-4) Hand tighten only. (External black body ring is decorative only)



4. If this unit is equipped with a red plastic thread protector or washer retainer at the inlet of the housing body, remove and discard. Now attach the filter by threading unit onto the shower water pipe. Firm hand tightening without plumber's tape should be sufficient for leak free operation. (Fig. 4-5) DO NOT OVER TIGHTEN.

5. Allow the water to run through the filter for 30 to 60 seconds before the first use.

6. If this Aquashower is not equipped with a Multipure showerhead, you may use any good quality showerhead or a hand held shower unit. Attach the flexible hose part of a hand held unit to the outlet threads of the filter. Follow the manufacturer's instructions for any other assembly required. Please use only a low flow showerhead manufactured since 1993. It should be a high quality showerhead not an economy plastic showerhead. It should conform to the requirements of the US Energy Policy Act of 1994. NOTE. Maximum chlorine removal is achieved with a water flow rate of no more than 2.5 gpm at 80 psi. At this flow rate, sufficient water contact time with the media is achieved.

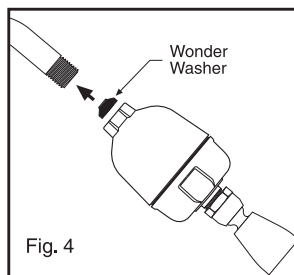


Fig. 4

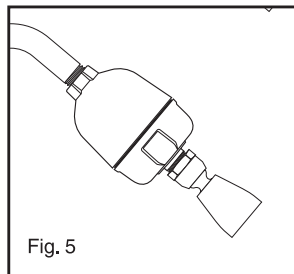


Fig. 5

Wonder Washer (Fig. 6 & 7)

All our shower filters now use the unique and exclusive Wonder Washer. The Wonder Washer replaces the sediment screen previously used on our shower filters. The Wonder Washer uses a beveled washer into which we insert a custom machined sleeve and base. This eliminates the need for Teflon or plumbers tape for a leak free seal. It also solves the problem of thin-walled shower arms cutting into a flat rubber washer allowing the washer to collapse and be drawn into the shower arm or pipe itself, causing a leak. The unique brass insert stabilizes the beveled washer making it impossible to collapse. We consider this a quality feature for our quality shower filter products.

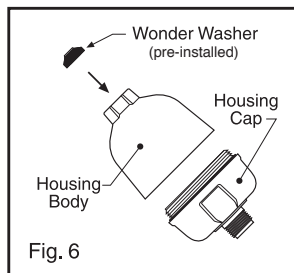


Fig. 6

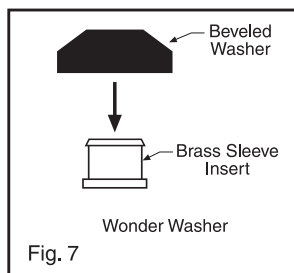


Fig. 7

When to Change Your Cartridge and Housing Body

The Aquashower shower filter should remove unhealthy free chlorine for a period of 6 to 7 months. Chlorine levels vary from city to city. If you live in an area where the source water contains high levels of suspended solids or where scale buildup in pipes is excessive, you may experience an early reduction in water flow. This may be an indication that you need to replace the cartridge more frequently than the recommended 6 to 7 months. For best results, the housing body should be replaced every 3 years or as needed.

Filter Media

KDF 55

There are 15 ounces (466 grams) of KDF media in each Aquashower cartridge. As chlorinated water flows through the filter cartridge, the two dissimilar metals in KDF, (copper and zinc), create a galvanic or electrolytic reaction which causes the two chlorine ions to combine with some prevalent metal in the water to form a harmless chloride. KDF does not hold the chlorine, it changes chlorine from an element to a harmless compound, which flushes out of the filter. KDF is a non-toxic granular filter media which is produced within the regulations of "The Drinking Water Act" (PL 99-399 of June 19, 1986.)

Crystalline Quartz

The Aquashower is the world's first shower filter to utilize specially treated virgin quartz to 'energize' the shower experience by reducing the surface tension of the water. This increases the lathering capacity of your soap and shampoo. Quartz does not soften water but gives the water a lighter 'feel', similar to the feeling of softened water. Our natural crystals come to us directly from two North American high-energy crystal mines. We use specially filtered water to clean our crystals and sun dry them for maximum purity.

Specifications for Housing and Filter Cartridge

Maximum pressure	100 psi
Minimum pressure	30 psi
Overall weight	20 oz . . . 567 grams
Housing material	ABS/PC
Maximum water temperature	120 F (49 C)
Dimensions	3" x 4 3/4" 7.62 cm x 12.1 cm
Minimum water temperature	40 F (05 C)

Aquashower Safety Feature

The Aquashower has been designed to prevent either the cracking of the filter body or of thread separation in the event the user fails to change a cartridge when clogged with rust and sediment and of a failure to replace on schedule.

If the cartridge is clogged and flow rate is reduced there will be a back-flow toward the inlet washer forcing it aside and allowing water to flow into the body which should always be dry when operating correctly. That will

result in a leak or drip where the cap and body screw together. That leak is a safety drip to release water pressure and to prevent breakage. It is also a signal that the cartridge is past changing time.

Let's Talk About Recycling

Multipure cannot reuse the media but encourages you to return your used cartridge for complete recycling to be used in other industrial applications. We'd much prefer these products get a second life than end up in a landfill. The small amount of postage it takes to send it back is a contribution to the welfare of our planet. Please mail or ship the cartridge to:

GOOD EARTH RECYCLERS
P.O. BOX 2167
San Gabriel, CA 91778-2167

Testing at Home for Free Chlorine

Chlorine testing using the OTO (standard swimming pool kit) or DPD test kits may incorrectly show a reading of little or no free chlorine reduction. The presence of iodine ions in the water will magnify the chloramine interference with the OTO or DPD procedure. The presence of chloramine used as a disinfectant in the water supply will also produce erroneous test results.

When a municipality injects both chlorine and ammonia simultaneously into the water supply it produces chloramine. Chloramine reduces the free chlorine's ability to combine with organic matter in the water that produces potentially harmful trihalomethanes, THM's.

Because chloramine has less disinfecting ability than free chlorine, a higher concentration of chlorine is usually used to get the same bacteria kill rate (1)The chlorine remaining in the water, after it has combined with any harmful bacteria, is the free chlorine that the Aquashower removes. No KDF or carbon shower filter can remove 100% of the free chlorine. To get accurate readings of free chlorine levels it is better to use quality laboratory procedures such as the amperometric titration test method. Even under the best testing methods some amount of chlorine will be indicated.

REFERENCES: (1) Dr Frederick A. Amalfi Ph.D., Laboratory Director, Aquatic Testing & Consulting, Inc (2) 'Standard Methods of Examination of Water and Wastewater', American Public Health Association. 1975, 1985 Testing was performed under standard laboratory conditions, however, actual performance may vary based on water conditions. For further discussion of

our free chlorine and combined chlorine comments, the following may be of some use. "This system has been tested by WQA according to NSF/ANSI 177 for reduction of free available chlorine. The concentration of free available chlorine in water entering the system was reduced to a concentration less than or equal to the permissible limit for water leaving the system, as specified in NSF/ANSI 177. This system has not been evaluated for free available chlorine reduction performance in the presence of chloramines. Free available chlorine reduction performance may be impacted by the presence of chloramines in the water supply. Please contact your local water utility to determine if chloramines are used in treating your water."

Limited Warranty

The manufacturer warrants the Multipure Aquashower dechlorinating shower filter to be free from defects in materials and workmanship when installed, operated, and maintained in the manner instructed in the instruction sheet.

Filter housing and attached showerhead are warranted for one year from date of purchase. The filter cartridge is warranted for 90 days from date of purchase. The manufacturer will repair or replace any shower filter that fails to perform due to faulty material or workmanship. Items not covered under the warranty include damage due to misuse, improper maintenance, improper installation, excessive water pressure or temperature, freezing or general misapplication of filter's use and purpose. There are no warranties expressed or implied, other than those stated herein. We are not liable in any way for the damage arising from the misuse or misapplication of the product.

To make claims under this warranty, see your retailer or contact the distributor.

Notice on Limitations

This filter is designed for use on potable systems only. The shower filter effectively reduces free chlorine only. It does not introduce anything harmful to the water, but it is not intended as a drinking water filter. Do not allow a wet cartridge to freeze. (An unused filter cartridge has an indefinite shelf life) Do not use any type of sequestering agent ahead of the media. Its effectiveness will be reduced when used on high-iron content municipal water systems that use chemicals such as polyphosphates.



System Tested and Certified by
Water Quality Association according
to NSF/ANSI Standard 177 for the
Reduction of Free Available Chlorine.

Replacement Element: AQS F

Keep this Instruction Guide and Performance Date Sheet
for your future reference.

MADE IN U.S.A.



MULTIPURE™

7251 Cathedral Rock Drive, Las Vegas, NV 89128
702.360.8880 • 800.622.9206

www.multipure.com